

ROTOBALE
COMPACTION SOLUTIONS

PACK MORE, SPEND LESS



SAFETY FIRST!
Operation & Maintenance Manual
RV Series Vertical Compactor

Standard Model PSR Model



Rotobale Compaction Solutions Inc.

7232 Arthur Road #5 West, Kenilworth Ontario, N0G 2E0

Ph: 800-565-8027/ Fax: 519-323-3816

www.rotobalecompaction.ca

Rotobale Compaction Solutions Inc.
Kenilworth, Ontario, N0G 2E0
Tele (519) 323-3673 Fax: (519) 323-3816

RV Series Compactors

Operation Manual

TO OPERATE COMPACTOR:

1. Insert the key in the switch and turn it right. If equipped with digital start, enter start code.
2. The machine will start and ram will go to the top and pause. At this time you will be able to open the door and place material inside chamber.
3. Closing door will start machine automatically and compress material into bin.

POWER ON LIGHT: Indicates power to system.

STOP BUTTON: Press to stop the compactor.

$\frac{3}{4}$ **FULL LIGHT:** This light will turn on when the pressure inside the charging chamber reaches a pre-set limit (1,400 psi).

FULL LIGHT: When pressure inside the charging chamber reaches a pre-set limit, (1,800 psi), the “full light” will illuminate. The container needs to be emptied. Pressing stop button will turn light off and reset system

Rotobale Compaction Solutions Inc.

Kenilworth, Ontario, N0G 2E0

Tele (519) 323-3673 Fax: (519) 323-3816

RV Series Compactors Maintenance Manual

Hydraulic System:

The manufacturer recommends regular inspection of all hoses and visual inspection of hydraulic components. All inspections must be done with compactor disabled. By doing so the user becomes more familiar with the compactor, which in turn guarantees early detection of possible problems (E.g.: leaks). While inspecting hoses look for cuts, abrasions and fluid. Look for leaks at and around the 'power pack', at all hose connections and inside the rear of the compaction chamber. If any hydraulic fluid is visible, the user should contact the manufacturer. The hydraulic fluid level in the power pack reservoir should be maintained at 2" from the top of the tank, with the ram in the up position. Only a qualified technician should service any components in the hydraulic system.

Lockout Procedure:

NOTE: Only a qualified technician should perform work on electrical system. To turn off and lockout the power supply, first locate the electrical disconnect box for the compactor. This box should be located within 30 feet of the machine. Pull the handle down or turn the switch to the "off" position to shut off the electricity. Put a padlock through the holes of the handle or switch and lock it so that it cannot be turned on without removing the lock. Only the person locking out the machine should have a key for the padlock. If more than one person is involved, the person who disconnected and locked out the power supply should communicate the purpose and status of the disconnecting and locking out. A non-conducting tag secured in a conspicuous location may serve this purpose. For more guidelines concerning this procedure, refer to the "Occupational Health and Safety Act and Regulations for Industrial Establishments" section

Warranty:

All equipment designed and manufactured by Rotobale Compaction Solutions Inc. (RCS) carries a (1) year parts and labour guarantee. A Rotobale waste system is constructed of high-grade materials and is guaranteed to perform on a continued basis at its rated capacity. Any parts that prove defective within (1) year from the date of installation will be replaced without charge, provided the purchaser notifies any such defects to RCS. Some units may be purchased with extended warranties.

Voiding of Warranty:

If the contents of this manual are explicitly followed, the operation of the Rotobale waste system is guaranteed. If however operations are performed in a matter not in accordance with these instructions and a defect appears in the waste system, the owner shall make void the warranty that accompanies their Rotobale machine. In addition, defects resulting from service work not authorized by RCS shall render the warranty void.



RV Inspection Report

Site name _____

Inspection date _____ Serial number _____

Electrical Inspection Points

Comments

- Power on light _____
- Start button _____
- Stop/system reset button _____
- Full indicator light _____
- 75% indicator light _____
- Timer 1, _____
- Main Supply & Control fuse Sizing _____
- Gate & Door Switches _____
- Stop button _____

Hydraulic Inspection Points

- Cylinder extend hoses _____
- Cylinder retract hoses _____
- Cylinder shaft seals _____
- Pump suction / pressure hoses _____
- Hydraulic valve (shifting, no leaks) _____
- Pump (pressure test, no leaks) _____
- Relief valve (pressure test, setting 2200psi) _____
- Full Pressure switch (pressure test, setting 1800psi) _____
- 75% Pressure switch (pressure test, setting 1400psi) _____
- Hydraulic oil level (down 2") _____
- Water Oil Test _____

Compactor Inspection Points

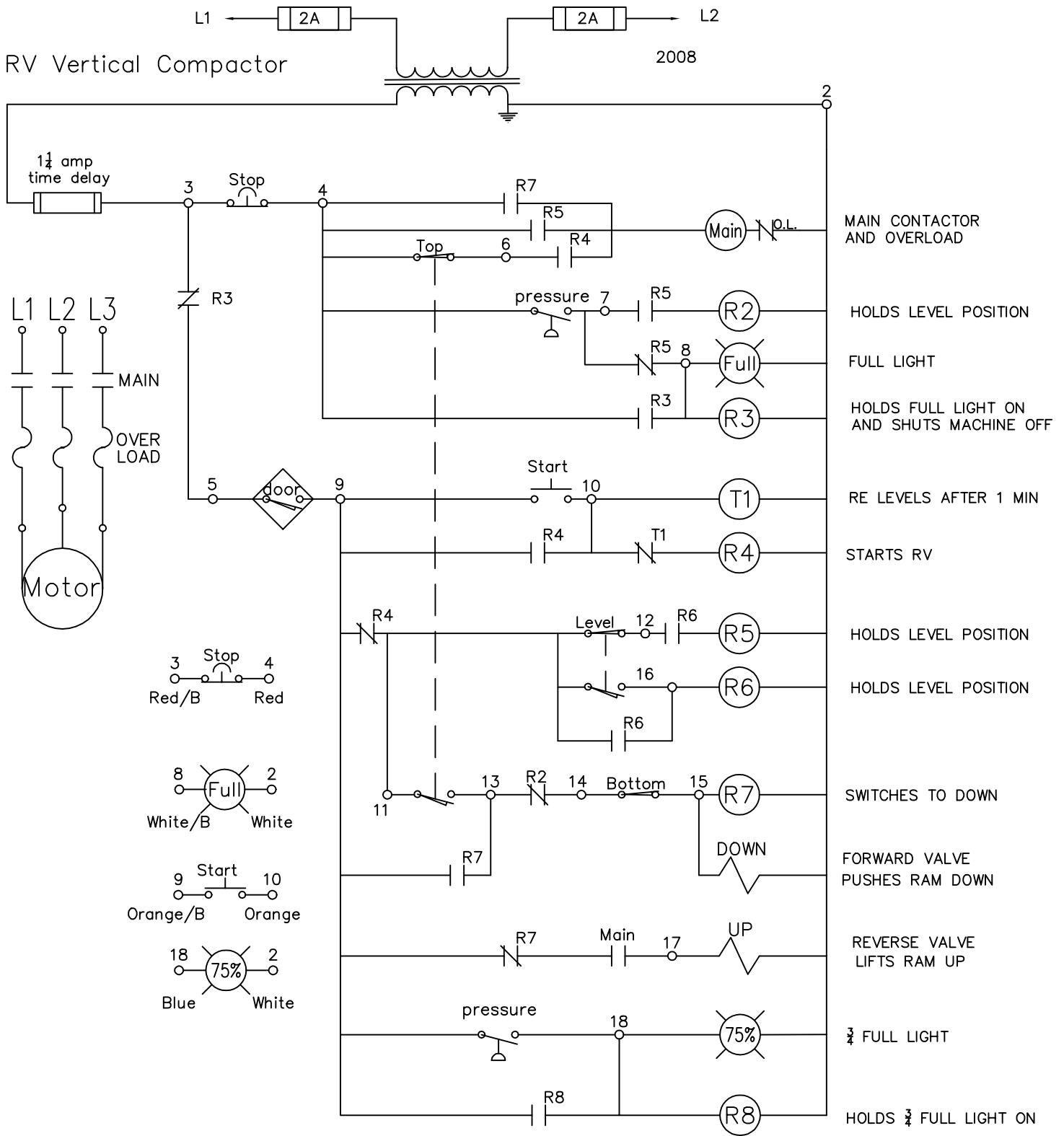
- Cylinder pins secure _____
- Leg & guide anchor pins _____
- Wall chute & Stand _____
- Area behind ram is clear of debris _____
- Under charge box clear _____
- Cover Secure _____

Container Inspection Points

- Rails & Guides _____
- Lift Pockets _____
- Bottom of bin _____
- Leaks at bottom of bin _____
- Damage to front of bin (caused by truck) _____

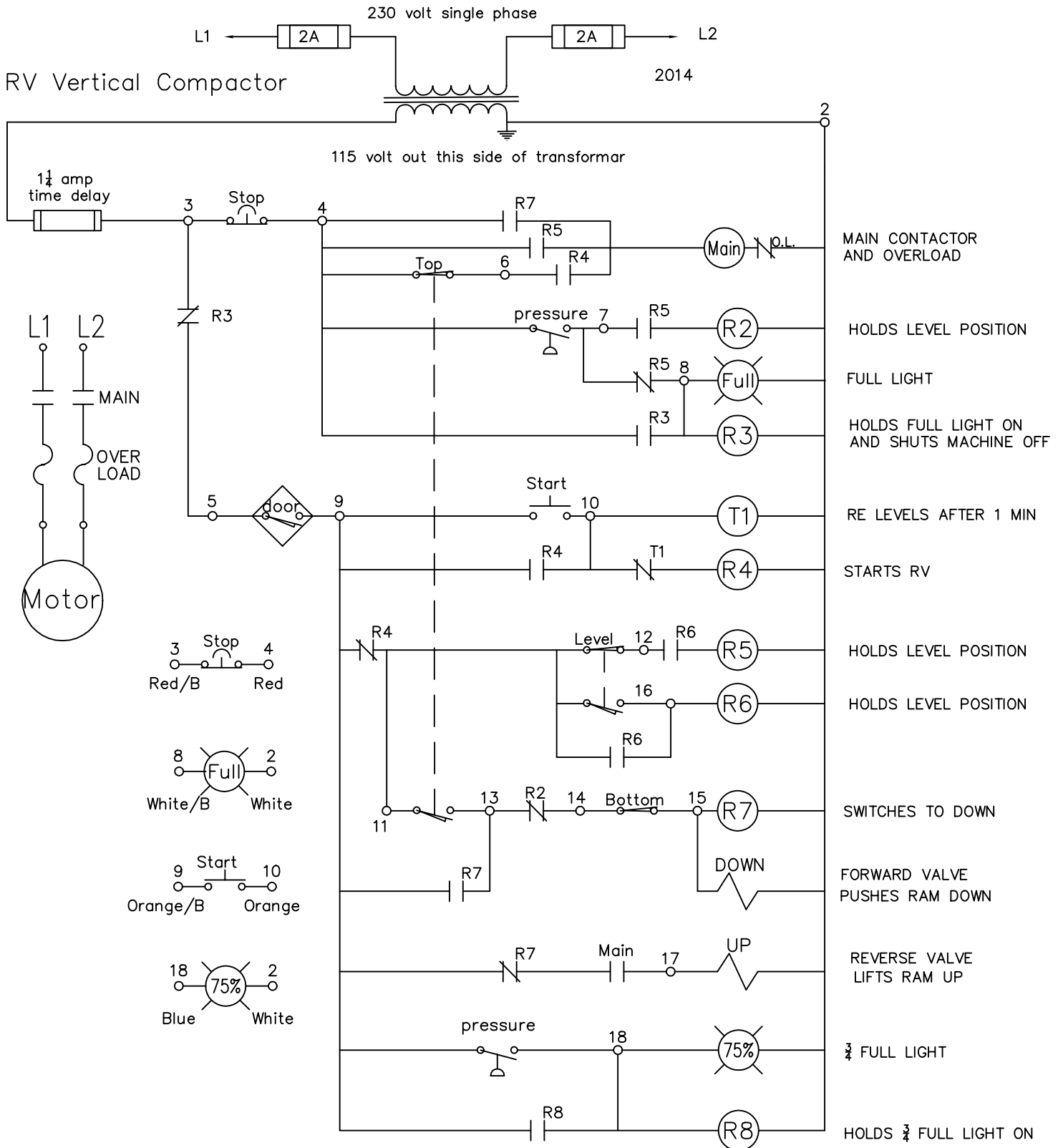
RV Vertical Compactor

2008



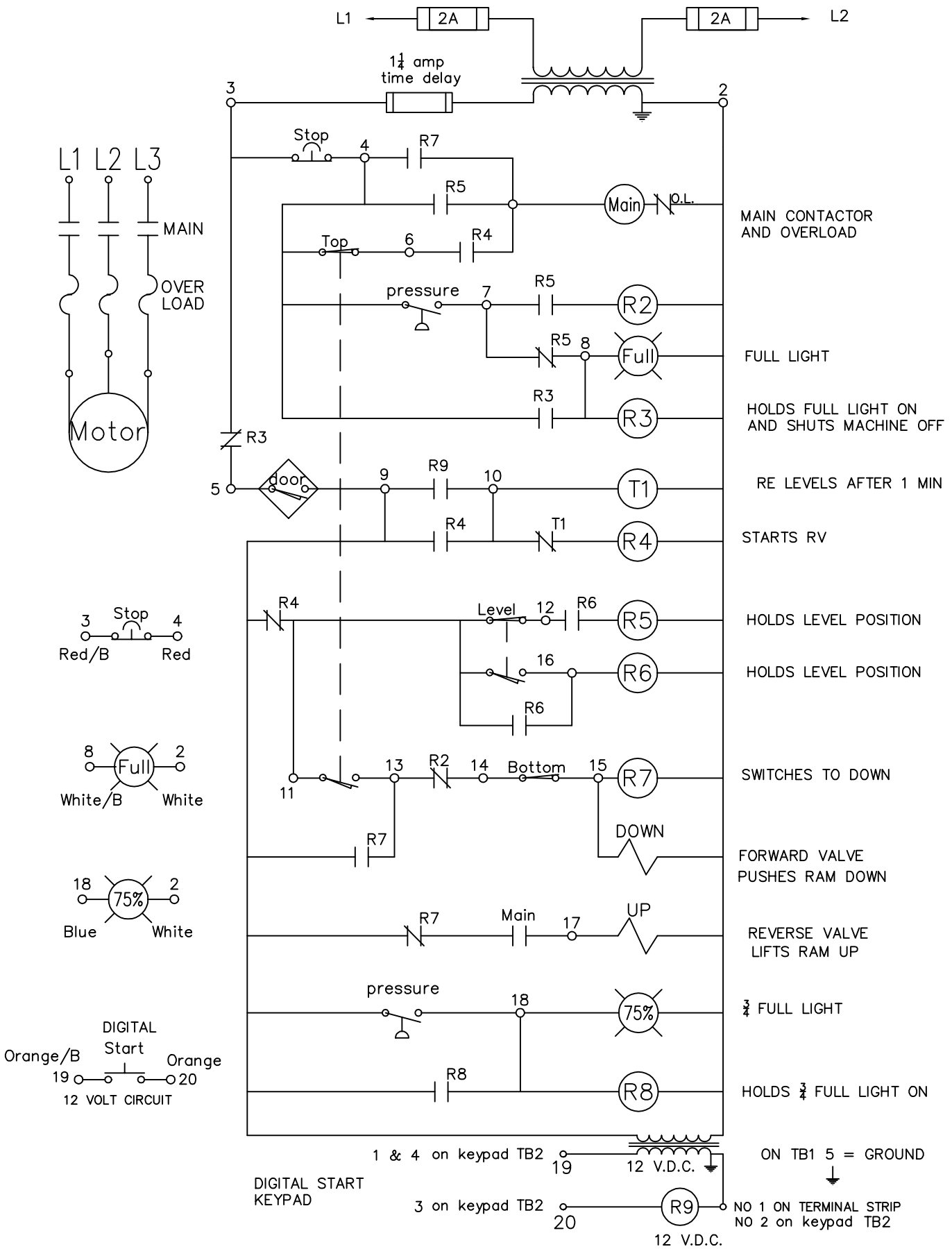
RV Vertical Compactor

2014



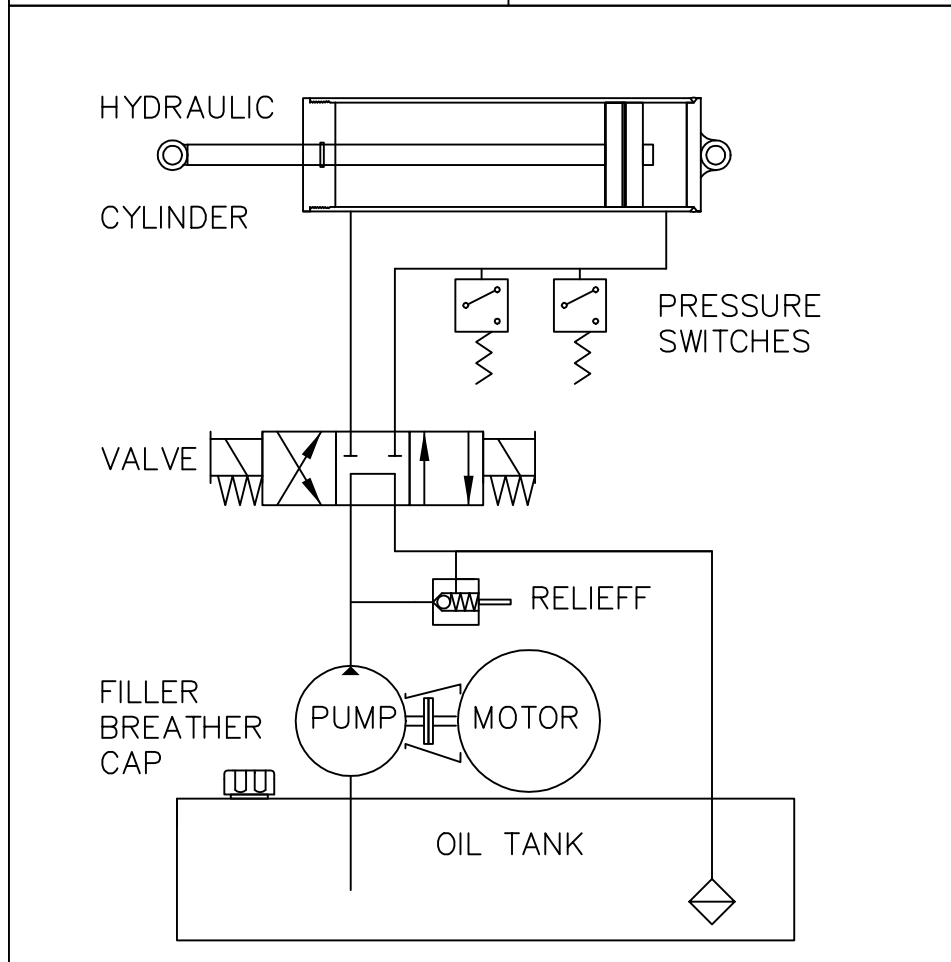
RV Vertical Compactor Digital Start

JAN 24 2011



ROTOBALE COMPACTION SOLUTIONS RV HYDRAULICS

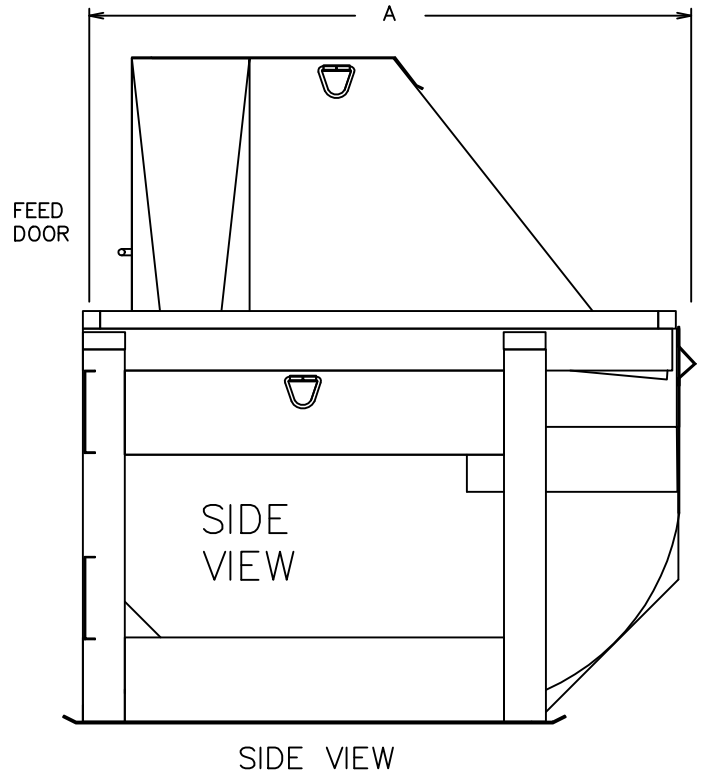
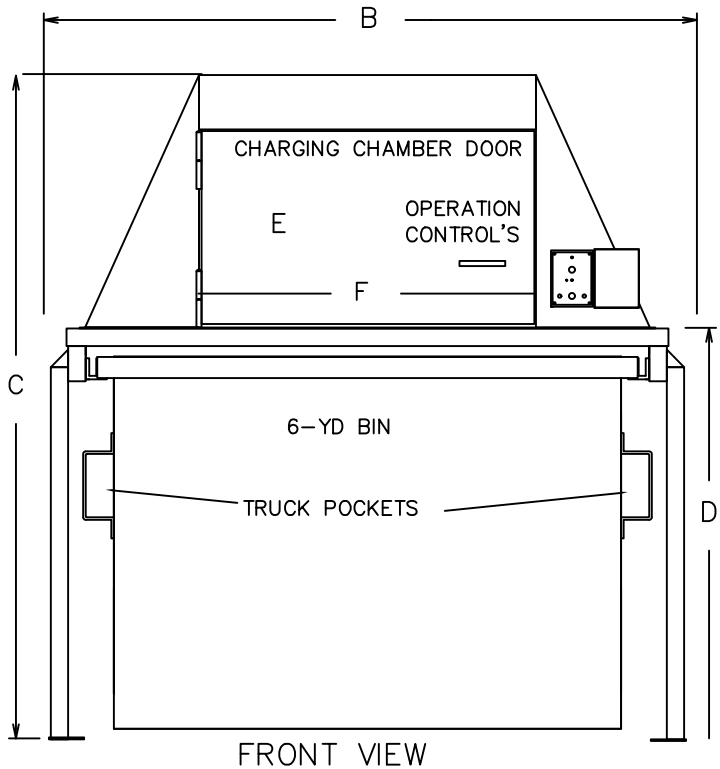
| PARTS | DESCRIPTION |
|--|-------------------|
| 1) @ $\frac{3}{8}$ X 28 X $\frac{3}{8}$ ENDS | B - CYLINDER HOSE |
| 1) @ $\frac{3}{8}$ X 19 X $\frac{3}{8}$ ENDS | A - CYLINDER HOSE |
| 1) @ $\frac{1}{2}$ X 7 pipe with boss | SUCTION HOSE |
| 1) $\frac{3}{8}$ X 2 NIPPLE | P - HOSE |
| 1) $\frac{1}{2}$ X 8 Rubber with $\frac{3}{8}$ end | T - HOSE |
| 56 FRAME 1800 RPM | MOTOR 2 HP |
| R 75 $\frac{5}{8}$ X $\frac{1}{2}$ | COUPLING |
| C - FLANGE $3\frac{1}{2}$ | BELL HOUSING |
| honer 1L075PH295 G.P.M.= 2 | HYDRAULIC PUMP |
| 1) CYLINDER @ 4 X 15 | RAM CYLINDER |
| WE43 - G03 - C60 - A110 | VALVE |
| MANIFOLD ROTOBALE # 2 | RAM MANIFOLD |
| RELIEF 85002129 | MAIN RELIEF |



ROTOBALE COMPACTION SOLUTIONS

KENILWORTH, ONTARIO, CANADA. NOG 2E0

TEL: 519-323-3673 FAX: 519-323-3816



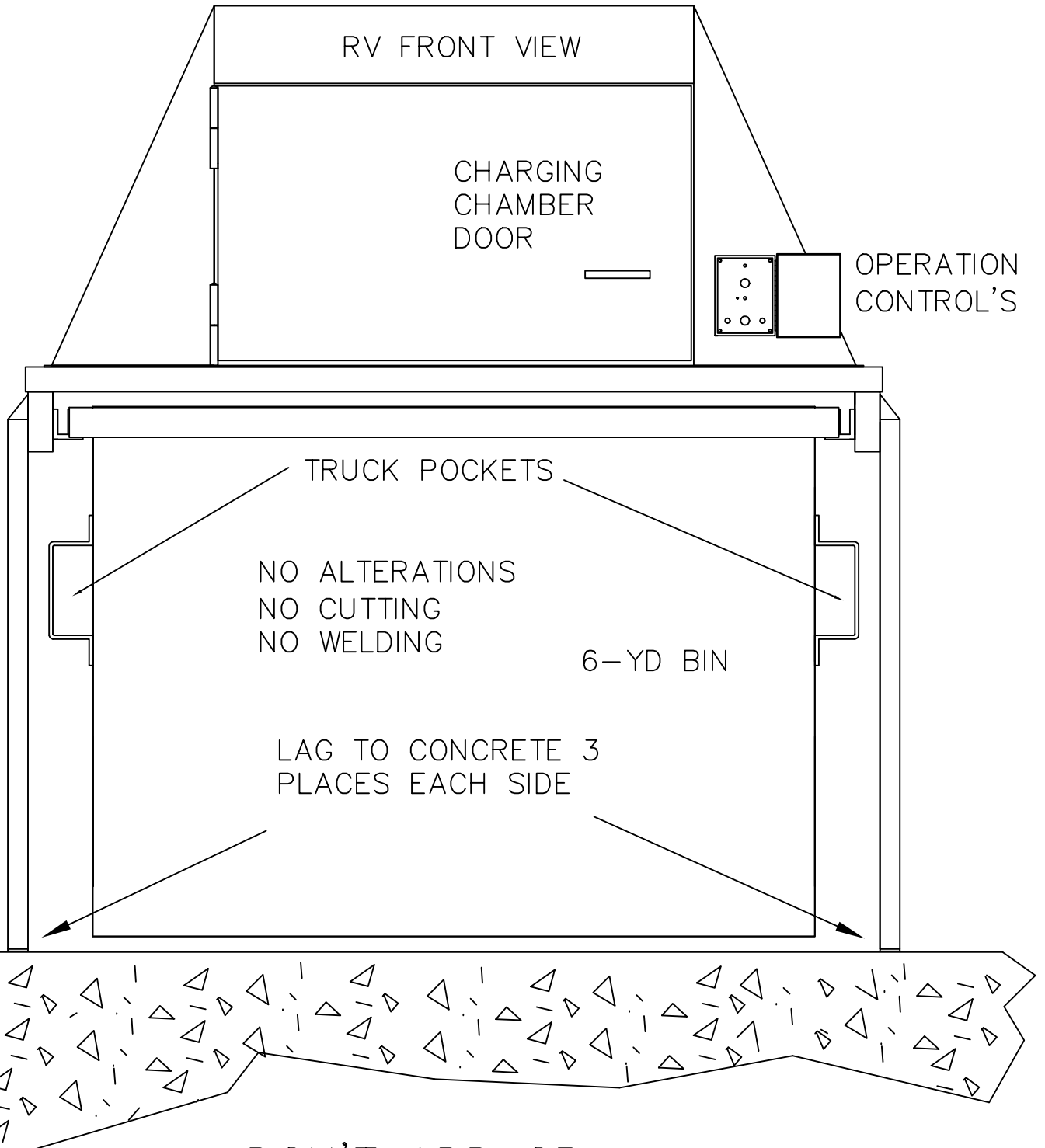
| CONTAINER CAPACITY | | 6 YARD | 8 YARD |
|--------------------|----------|--------------------|--------|
| OVERALL DIMENSIONS | LENGHT A | 90" | 90" |
| | WIDTH B | 91" | 91" |
| | HEIGHT C | 94 $\frac{1}{2}$ " | 103" |
| | HEIGHT D | 59" | 67" |
| CHARGE OPENING | HEIGHT E | 20" | 20" |
| | WIDTH F | 48" | 48" |
| MOTOR RATING | HP | 2 | 2 |
| CYLINDER | BORE | 4" | 4" |
| MAXIMUM FORCE | LB | 22500 | 22500 |
| SHIPPING WEIGHT | LB | 3400 | 3700 |
| PENETRATION | | 10" | 10" |

THE VERTICAL COMPACTORS ARE DESIGNED WITH BOTH THE HAULER AND USER IN MIND. THE VERTICAL COMPACTOR MAKES DUMPING SIMPLE Just Lift Side Closest To Truck And Pull Out FULLY ENGINEERED STOP DESIGN

- * NO SPILLAGE
- * LOW MAINTENANCE
- * SPACE SAVING LAYOUT
- * ULTRA-SAFE OPERATION
- * AUTO-CYCLE COMPACTING
- * LOCKABLE CONTROL PANEL

SPECIFICATIONS ARE SUBJECT TO CHANGE WITHOUT NOTICE TO ACCOMODATE EQUIPMENT IMPROVEMENTS

INSTALLATION SHEET



DON'T ADD OR
REMOVE ANYTHING
FROM THIS R-V

FACTORY DEFAULTS

| | |
|--------------------------------------|------------------------|
| MASTER PROGRAMMING CODE | 123456 |
| ENTRY CODE LENGTH | 4 DIGITS |
| REQUEST-TO-EXIT OUTPUT RELAY | MAIN RELAY |
| ALARM SHUNT OUTPUT | DISABLED |
| FORCED ENTRY OUTPUT | OUTPUT #3 |
| DOOR AJAR OUTPUT | OUTPUT #4 |
| MAIN RELAY ON TIME | 2 SECONDS |
| AUXILIARY RELAY ON TIME | 2 SECONDS |
| SOLID STATE OUTPUT #3 ON TIME | 2 SECONDS |
| SOLID STATE OUTPUT #4 ON TIME | 2 SECONDS |
| DOWNLIGHT ON TIME | 2 MINUTES |
| DOOR SENSE/INHIBIT INPUT | DOOR SENSE |
| KEYPAD LOCKOUT OUTPUT | DISABLED |
| KEYPAD ACTIVE OUTPUT | DISABLED |
| BEEPER SOUNDS WHEN KEY PRESSED | YES |
| BEEPER SOUNDS DURING RELAY #1 | NO |
| BEEPER SOUNDS DURING RELAY #2 | NO |
| BEEPER SOUNDS DURING OUTPUT #3 | NO |
| BEEPER SOUNDS DURING OUTPUT #4 | NO |
| KEYPAD LOCKOUT COUNT | 3 TRIES BEFORE LOCKOUT |
| ANTI-PASSBACK TIME | NO ANTI-PASSBACK |
| AUTO-RELOCK | ON |

BASIC PROGRAMMING

When the AK-21W is in Programming Mode, both indicators will turn off until programming begins. After a programming option number is entered the yellow indicator will blink. This shows that the AK-21W is ready to accept the new programming data. After the new data entry is complete, the yellow indicator will flash while the data is being stored. The green indicator will light if the data is accepted. The red indicator will light if any programming data is entered incorrectly, and the command will have to be fully re-entered.

Entering Programming Mode

The 6-digit Master Programming Code (default = 123456) is used to enter Programming Mode.

Press: **# 9 # Master Code**

Master Code = the current 6-digit Master Programming Code

Exiting Programming Mode

Press: *** * #**

The red indicator will light after exiting Programming Mode.

NOTE: The AK-21W will automatically exit Programming Mode after two minutes of inactivity.

Re-entering a Command After a Mistake

If the red indicator lights, signaling an incorrect entry, or an incorrect key is pressed during programming, to clear the keypad and re-enter the command:

Press: *** 9 #**

Setting Entry Code Length

Default: 4 digits

Press: **0 3 # Length #**

Length = 1 - 6 for entry code length

NOTE: If the Entry Code Length is going to be changed from the factory default of four digits, make this change first, before programming any entry codes.

Adding a New Entry Code

Press: **01 # Code # Code # Action #**

Code = The new entry code: 1-999999, depending on code length

Action = Relay output entry code will activate as follows:

- 1 = Relay #1, timed open
- 2 = Relay #2, timed open
- 3 = Both Relays, timed open
- 10 = Relay #1, toggled
- 20 = Relay #2, toggled
- 30 = Both Relays, toggled
- 12 = Relay #1 toggled; Relay #2, timed open
- 21 = Relay #1 timed open; Relay #2 toggled

The yellow LED will flash quickly while the AK-21W searches its memory for available space and duplicate entries. The green LED will light when the new code is stored.

If the new entry code chosen is already being used for another entry code, the red LED will light. A new *unique* code needs to be entered.

NOTE: Leading zeros (zeros before the code number, i.e. 0001) do not need to be entered when programming a new entry code. The AK-21W will internally add any zeros to fill all digits determined by the entry code length setting. Leading zeros will have to be entered by the user when entering their code to gain access.

Erasing a Single Entry Code

Press: **0 2 # Code # Code #**

Code = The entry code to delete.

The yellow indicator will flash quickly while the AK-21W searches its memory for the code to erase. The green indicator will light when the code is erased.

Erasing All Entry Codes

★ WARNING: PERFORMING THIS COMMAND WILL REMOVE ALL ENTRY CODES FROM THE MEMORY.

Press: **9 7 # 0 0 0 0 0 # 0 0 0 0 0 #**

NOTE: The green indicator will light while the memory is being erased. This may take up to 15 seconds.

Changing the 6-Digit Master Programming Code

Press: **9 8 # Master Code # Master Code #**

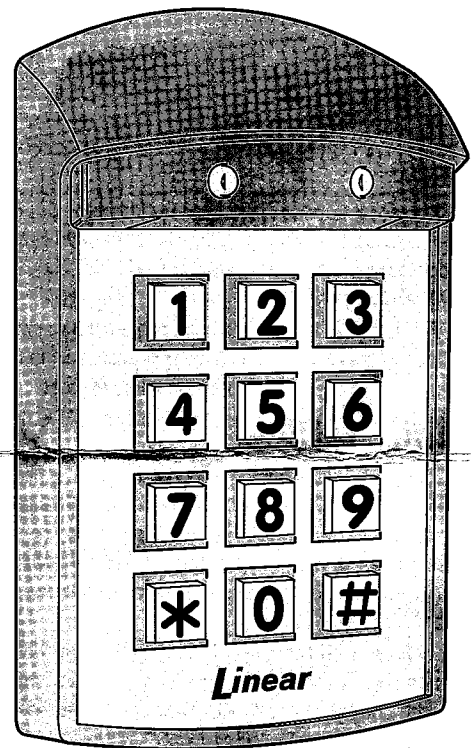
Master Code = The new 6-digit Master Programming Code

New master code: _____

Linear ACCESS

AK-21W

**Weather Resistant
Digital Keyless
Entry System**



Installation and Programming Instructions

Linear[®]

(760) 438-7000

USA & Canada (800) 421-1587 & (800) 392-0123

Toll Free FAX (800) 468-1340

www.linearcorp.com

NOCOLUBE AW SERIES

Product Data Sheet

NOCOLUBE AW SERIES

NOCOLUBE AW Series are premium hydraulic fluids formulated from high quality paraffinic base oils that meets severe pump requirements of all major manufacturers. NOCOLUBE AW Series provides outstanding anti-wear protection. The oils will provide excellent long service life under severe industrial and mobile hydraulic applications.

Typical Approvals

| | |
|--------------------------------------|---------------------|
| Vickers I-286-S, M-2950-S | AFNOR NF-E 48-690/1 |
| Cincinnati Milacron P-68, P-69, P-70 | AFNOR E 48-603 HM |
| Denison HF-0 | ISO 11158 TYPE HM |
| DIN 51524, Part 2 | |

GENERAL CHARACTERISTICS

| NOCOLUBE AW | 32 | 46 | 68 | 100 | 220 |
|---------------------------------------|------------|------------|------------|------------|-----------|
| Product Code | NOC1657 | NOC1658 | NOC1659 | NOC2778 | NOC2779 |
| Appearance | Light Pale | Light Pale | Light Pale | Light Pale | Dark Pale |
| Flash Pt., COC °C | 212 | 226 | 234 | 242 | 258 |
| Pour Point, °C | -24 | -24 | -18 | -15 | -15 |
| Viscosity | | | | | |
| CST @ 40°C | 32.0 | 46.0 | 68.0 | 100.0 | 220.0 |
| CST @ 100°C | 5.4 | 6.7 | 8.5 | 11.1 | 18.7 |
| Rust ASTM D 665B | Pass | Pass | Pass | Pass | Pass |
| Copper Strip Corrosion | 1A | 1A | 1A | 1A | 1A |
| Oxidation Life (hours), ASTM D-943 | 2500+ | 2500+ | 2500+ | ND | ND |
| Viscosity INDEX | 104 | 104 | 107 | 95 | 93 |

FEATURES

- Outstanding Thermal Stability
- Long Service Life
- Superior Hydrolytic Stability
- Excellent Remissibility
- Low Pour Point
- Qualified Products

BENEFITS

- Reduces sludge and sticking problems in close tolerance components
- Provides superior system cleanliness with reduced oxidation
- protects against rust and corrosion
- Works well when, contaminated with a small amount of water. Readily separates large amounts of water
- Good low temperature performance
- Proven field performance

Don't pollute! Dispose of used oil properly!

Call your NOCO sales representative for details on our Oil Recovery Program.

All reasonable care has been taken to ensure that the above information is accurate as of the date of printing.

NOCO Energy CORP.
Tonawanda, NY 14150
(800) 500-6626

DATE

16 / 03 / 2015

Product Data Sheet

NOCO MULTI-PURPOSE EP#2

NOCO MULTI-PURPOSE EP#2 is compatible with the most popular greases in use today, including Aluminum complex, calcium, calcium complex and lithium grease. It is not compatible with barium Ben tone or poly urea greases.

NOCO MULTI-PURPOSE EP#2 is multi-purpose, premium quality grease made from high viscosity Index base oils and a lithium complex soap thickener system. Because of its outstanding performance Properties, it can be used for the lubrication of machinery under heavy loads and high temperatures in a wide range of automotive, industrial, agricultural, mining and construction applications.

NOCO MULTI-PURPOSE EP#2 can be used to lubricate plain ball and roller bearings in equipment Operating from slow to high speeds and at temperatures ranging from -24°C (15°F) to 170°C (365°F).

TYPICAL PROPERTIES & CHARACTERISTICS

| Test Methods | Description | Specification |
|--------------|---|---|
| | NLGI Grade | 2 |
| ASTM D 217 | Cone penetration @ 77°F , worked 60 strokes | 265 - 295 |
| ASTM D 128 | Thickener Type | Lithium Complex |
| ASTM D 128 | Thickener Content, % | 4 - 7 |
| ASTM D 2265 | Dropping Point | 168°C , (360°F) |
| ASTM D 445 | Base Oil Viscosity, cut @ 40°C | 175 - 180 |
| ASTM D 2270 | Viscosity Index | 80 min. |
| VISUAL | Color | Dark Amber |
| VISUAL | Appearance | Smooth |
| ASTM D 2509 | Timkin OK Load, lbs. | 35 min |

Don't Pollute! Dispose or used oil properly!

Call your NOCO sales representative for details on our Oil Recovery Program

All reasonable care has been taken to ensure that the above information is accurate as of the date of printing.

NOCO Energy Corp.
Tonawanda, NY 14150
(800) 500-6626